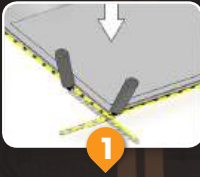


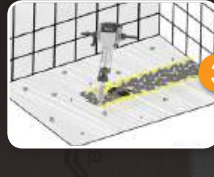
Installation Instructions Solid & Concrete Flooring



Position the tray over the desired location for the shower tight against plaster finish on the back walls in order to provide a seal. Mark around the waste area and the tray edges on the floor. Plan the waste outlet position.



Remove the tray and start to remove any tiling or vinyl flooring to expose the concrete flooring. Cut along marked area taking care not to cut through any pipework or any electrical wiring which may be buried below.

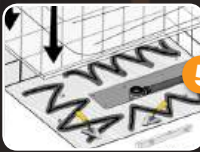


Dig out the floor area and remove any hard material to allow for the tray, waste and outlet pipe. Remove the flooring to allow the installation of the waste and the outlet pipe with a fall of at least 1 in 40. When using the low depth waste, dig out approximately 60mm (2 1/2") depth needed under the waste position to allow installation. Connect the waste to the outlet pipe.



Test the waste trap drainage and for leakages by pouring water into the waste trap before fitting

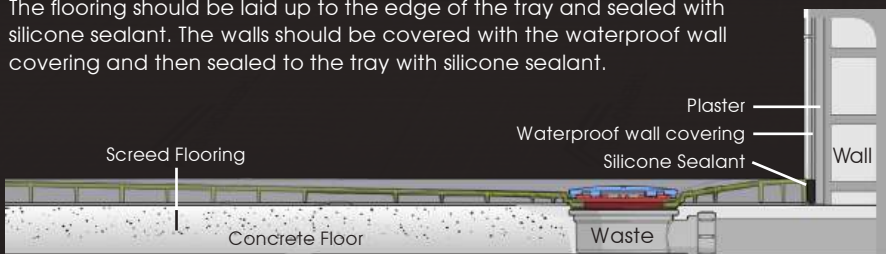
to the tray. Sand and cement should be used to raise the tray to the finished floor height and ensure this is level. Allow this mix to set. The tray should be bedded onto flexible adhesive, applied to the subscreed to hold the tray firmly in position and level. Do not dot and dab. Foam should not be used as a load bearing support as it will break down under repeated product use.



Lower the tray over the waste and check the waste drain position and test that all 4 edges of the tray are level. The edges of the tray must finish flush and level with the top of the finished floor covering.

6 Connect the waste drain to the tray using the clamping ring. See separate waste instructions. The waste cover should now be secured in place and protected for the rest of the installation.

The flooring should be laid up to the edge of the tray and sealed with silicone sealant. The walls should be covered with the waterproof wall covering and then sealed to the tray with silicone sealant.



Installation Instructions

Wooden Flooring



1

Position the tray over the desired location for the shower and mark around the edge of the shower former.



2

Cut into the flooring, taking care not to cut through supporting joists or any plumbing or electrical wiring.



3

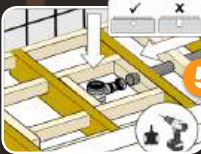
Carefully remove the floor boards. Locate the waste outlet pipe.



4

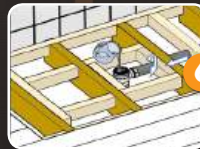
The waste area must be supported with additional noggins 220 mm around the waste.

Additional noggins or joists must be used on all edges and between joists centres at a minimum of 350mm.



5

Do not cut into the joists, always drill through when installing the waste drain trap and waste outlet pipe.



6

Water test the waste drain trap for flow and for any leaks and ensure that the rubber seals are in place.



7

Bed the tray on flexible adhesive on the joists and check it's level and supported on all 4 sides. The waste clamping ring should now be fitted to secure and seal the waste to the tray. Install the waste trap to the tray, see separate waste instructions. The waste cover should now be secured in place. Re-check tray is level and test for water drainage efficiency of tray. Vinyl floor covering or tiles should finish flush and up to the tray as shown below. The flooring should be laid up to the edge of the tray and sealed with silicone sealant. The walls should be covered with the waterproof wall covering and then sealed to the tray with silicone sealant.

